

THE
VOICE
for **LIFE**

GUIDE TO MUSICIANSHIP

BRONZE AWARD: SINGER'S COPY
(BASS CLEF)



CONTENTS

Section B1, test (a)

Sample tests 2

Section B1, test (b)

Sample tests 3

Section B1, test (c)

Sample tests 4

Mock exam materials 6

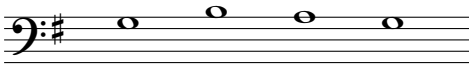
This downloadable resource is intended for use only in conjunction with the printed copy of *The Voice for Life Guide to Musicianship*. It should not be used for any other purposes without prior permission from the publisher.

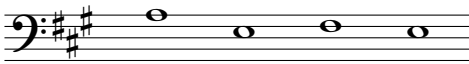
See the printed copy or consult www.rscm.com/musicianship for further details.


This collection, its typography, music examples, artwork and layout are
copyright © 2014 The Royal School of Church Music

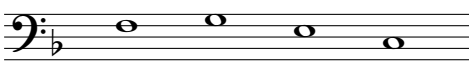
All rights reserved. No part of this publication may be reproduced, stored in a retrieval system, or transmitted, in any form or by any means, without the prior permission in writing of the copyright holder, or as expressly permitted by law.


Sample tests (page 66)

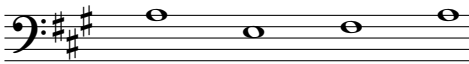
01 

02 

03 

04 

05 

06 

Sample tests (page 68)

01 

02 

03 

04 

05 

06 

07 

08 

Sample tests page 70

01

Musical score for test 01, page 70. The score is in 2/4 time and B-flat major. It consists of three staves: a vocal line in bass clef, a piano accompaniment in treble clef, and a piano accompaniment in bass clef. The vocal line starts with a mezzo-piano (*mp*) dynamic and moves to mezzo-forte (*mf*) after the first measure. The piano accompaniment in the treble clef starts piano (*p*) and moves to mezzo-forte (*mf*) after the first measure. The piano accompaniment in the bass clef follows the vocal line's dynamics.

Sample tests page 71

02

Musical score for test 02, page 71. The score is in 3/4 time and D major. It consists of three staves: a vocal line in bass clef, a piano accompaniment in treble clef, and a piano accompaniment in bass clef. The vocal line starts with mezzo-piano (*mp*) dynamics and moves to mezzo-forte (*mf*) after the first measure. The piano accompaniment in the treble clef starts piano (*p*) and moves to mezzo-forte (*mf*) after the first measure. The piano accompaniment in the bass clef follows the vocal line's dynamics.

03

Musical score for test 03, page 71. The score is in 2/4 time and D major. It consists of three staves: a vocal line in bass clef, a piano accompaniment in treble clef, and a piano accompaniment in bass clef. The vocal line starts with forte (*f*) dynamics and moves to mezzo-piano (*mp*) after the first measure. The piano accompaniment in the treble clef starts forte (*f*) and moves to mezzo-piano (*mp*) after the first measure. The piano accompaniment in the bass clef follows the vocal line's dynamics.

Sample tests (page 71 contd)

04

Musical score for sample test 04. It consists of three staves: a single bass staff at the top, and a grand staff (treble and bass) at the bottom. The key signature is three sharps (F#, C#, G#) and the time signature is 3/4. The bass staff contains a melodic line with a slur over the first two measures and another slur over the last two measures. The grand staff provides accompaniment. The piano part starts with a *pp* dynamic, moves to *mp* in the second measure, and ends with a *mf* dynamic in the final measure. The piece concludes with a double bar line.

Sample tests (page 72)

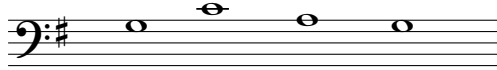
05

Musical score for sample test 05. It consists of three staves: a single bass staff at the top, and a grand staff (treble and bass) at the bottom. The key signature is two flats (Bb, Eb) and the time signature is 2/4. The bass staff contains a melodic line with a slur over the first two measures and another slur over the last two measures. There are asterisks (*) under the notes in the first two measures of the bass staff. The grand staff provides accompaniment. The piece concludes with a double bar line.

Mock exam, tests A (page 75)

A

Group of four notes



Rhythm pattern



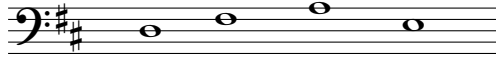
Two phrases to sing

A musical score for two phrases to sing. The top staff is in bass clef with a 3/4 time signature and a key signature of one sharp (F#). The first phrase starts with a forte (*f*) dynamic and ends with a mezzo-piano (*mp*) dynamic. The bottom two staves are piano accompaniment in treble and bass clefs, respectively, with a 3/4 time signature and a key signature of one sharp (F#). The piano accompaniment starts with a mezzo-forte (*mf*) dynamic and ends with a piano (*p*) dynamic.

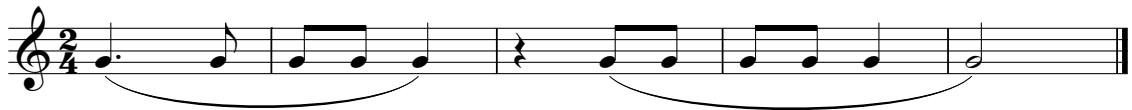
Mock exam, tests B (page 76)

B

Group of four notes



Rhythm pattern



Two phrases to sing

Two systems of musical notation. The top system is for a singer in bass clef, 2/4 time, key of D major. It contains two phrases, each marked *mp* (mezzo-piano). The first phrase consists of a dotted quarter note (D3), an eighth note (E3), a quarter note (F#3), and a quarter note (G3). The second phrase consists of a quarter note (A3), a quarter note (B3), a quarter note (C4), a quarter note (D4), a quarter note (E4), a quarter note (F#4), and a half note (G4). The bottom system is for piano accompaniment in treble and bass clefs, 2/4 time, key of D major. The right hand (treble clef) is marked *mf* (mezzo-forte) and provides harmonic support with chords and single notes. The left hand (bass clef) provides a simple bass line.

Mock exam, tests D (page 78)

D

Group of four notes



Rhythm pattern

